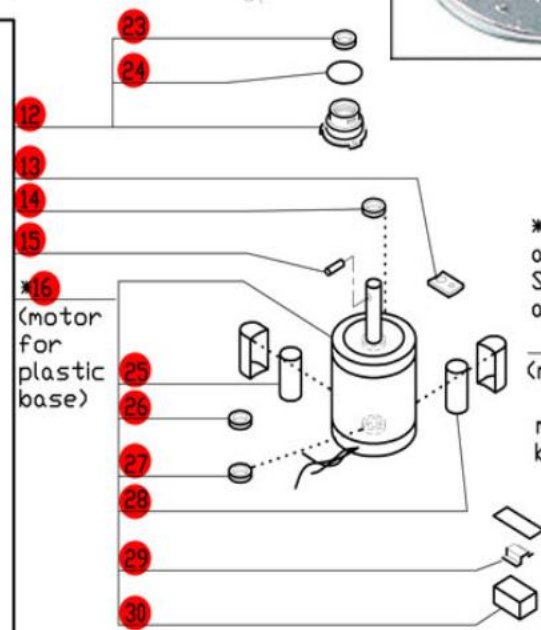
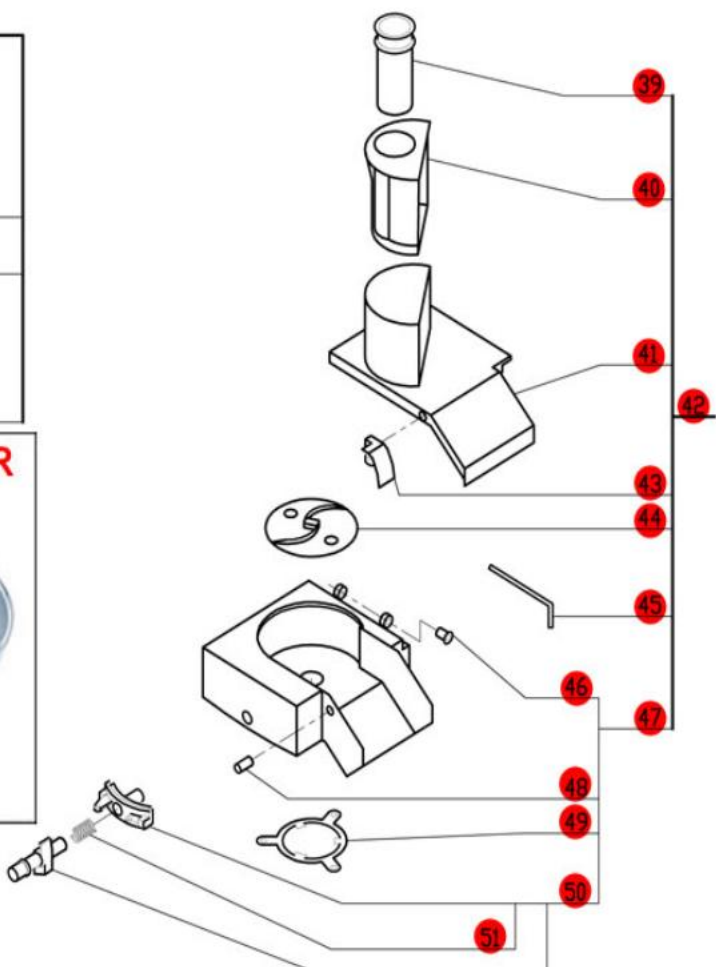
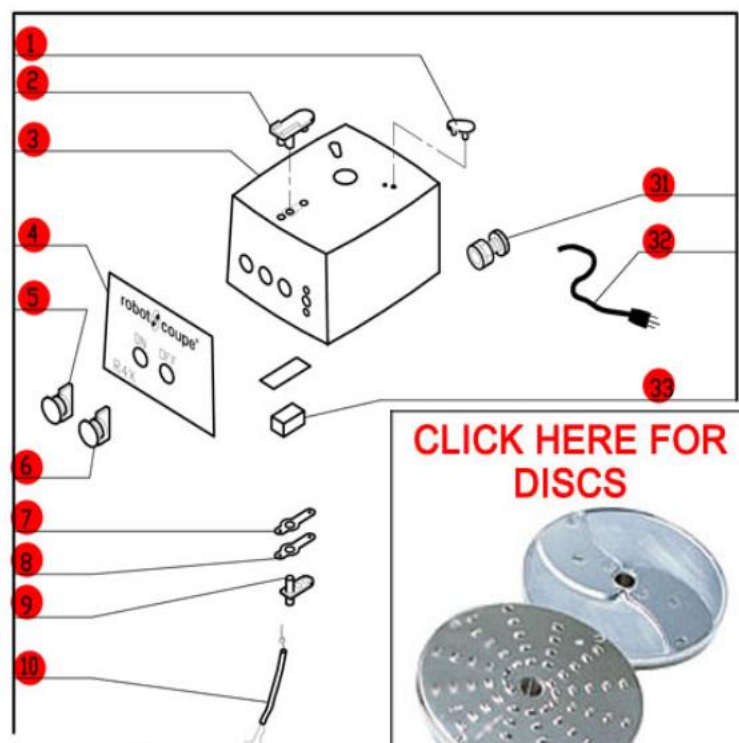
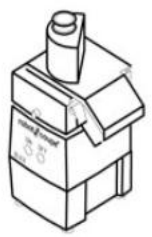
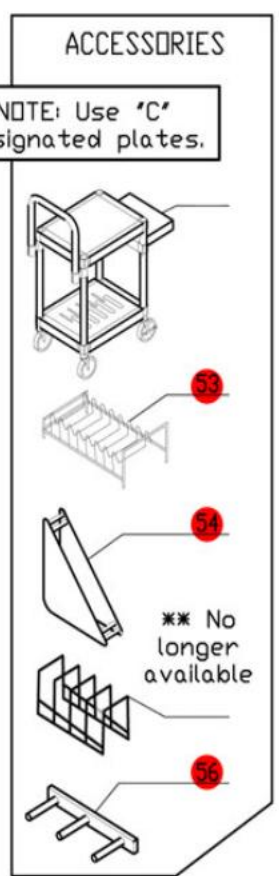
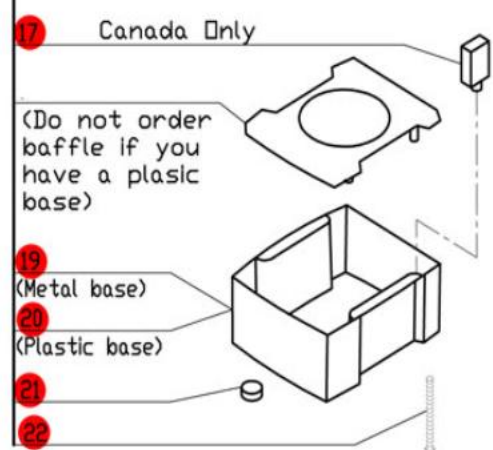
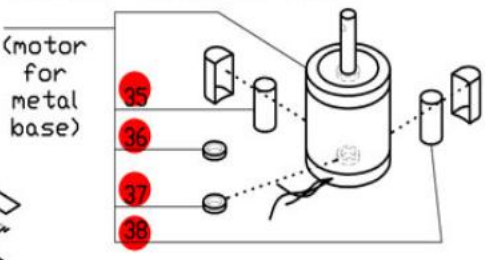


R4X Series A

Series A, Serial Numbers (R4XxxxxxA)
 1- Speed, 120 Volt, 1 Phase, 60Hz., 1 HP.
 850 RPM, 7.5 Amps
 Use C Designated Plates.



* RA604E Motor is no longer available. Order number SI94565, R611, 117770, 29620, and four BX658 screws.



**Click on Red Dot
 OR
 Call us
 800-465-6060**